

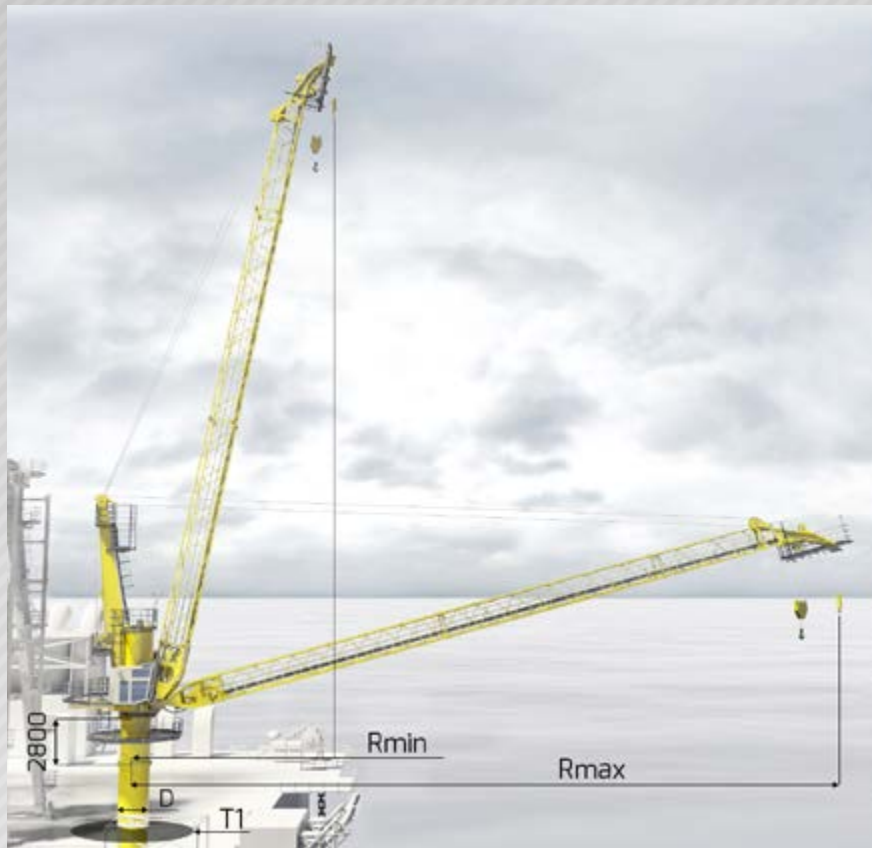


PROTEA[®]

STANDARD PRODUCTS • BESPOKE
DESIGN • UNIQUE SOLUTIONS

King Post Cranes

TYPICAL CRANE ARRANGEMENT



TYPICAL OPTIONS

THE FOLLOWING OPTIONS ARE AVAILABLE:

- Designed in accordance with EN 13852, DNV, API or ABS
- Electro-hydraulic drive
- Diesel-hydraulic drive
- Complete explosion protection according to ATEX guidelines
- Man-riding winch
- AOPS Automatic Overload Protection System
- MOPS Manual Overload Protection System
- Rope Tensioning Systems - Constant Tension
- AHC Active Heave Compensator
- Complete pedestal

TYPICAL RANGE DATA

Type	D mm	Lifting Capacity mT	Hoisting Speed m/min	Luffing Time sec	Slewing Speed rpm	T1 mm	Size	R _{max} mm	R _{min} mm
Proteus KP 1130	1 150	30	22.0	60	1.3	3 200	1	28 300	3 400
							2	32 300	3 500
							3	36 300	3 600
Proteus KP 1540	1 500	40	22.5	70	1.1	4 000	1	36 300	4 700
							2	40 300	4 800
							3	44 300	4 900
Proteus KP 1860	1 800	60	20.0	80	0.9	5 000	1	44 300	5 900
							2	48 300	6 000
							3	52 300	6 100
Proteus KP 2280	2 200	80	18.8	90	0.7	6 000	1	48 500	5 100
							2	52 500	6 300
							3	60 000	7 000
Proteus KP 24100	2 400	100	18.0	100	0.5	6 000	1	56 000	6 800
							2	60 000	7 100
							3	64 000	7 400

