



OWF PRODUCTS

PROTEA IS AN INTERNATIONAL ENGINEERING & EQUIPMENT MANUFACTURING COMPANY, WITH OVER 20 YEARS OF EXPERIENCE IN THE MARKET.

With design offices, fabrication facilities and assembly hall in one location, PROTEA can meet customer's specific needs and requirements every time. On-site test facilities allows us to conduct comprehensive functional testing of equipment, which minimises the risk of any failures.

PROTEA IS A PROVEN SUPPLIER OF LIFTING AND MECHANICAL HANDLING EQUIPMENT TO THE OFFSHORE AND WIND ENERGY INDUSTRY.

PEDESTAL CRANES

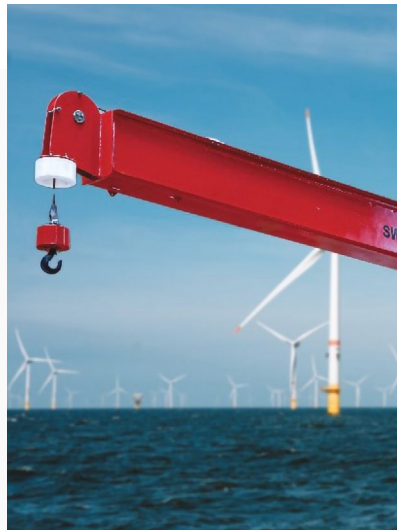
PROTEUS® Ram Luffing Pedestal cranes are designed for installation on a wide range of offshore platforms and facilities and have a proven performance history with many clients worldwide.

Wide range of max load and radius makes the pedestal cranes versatile for different projects.

Designed in accordance with international standards that include API, DNV, EN or NORSOK each machine can be easily configured to meet the specific requirements of any client.

This mix of unique features make PROTEA's cranes a perfect choice for modern offshore wind farms – allowing minimum service and remarkable ease of operation.

- ✓ **CAPACITY
FROM 4T TO 50T**
- ✓ **OUTREACH
UP TO 54M**
- ✓ **CABIN OR REMOTE CONTROL**



DAVIT CRANES AND BOAT LANDING CRANES

To satisfy the rising demand PROTEA developed a dedicated service cranes series for offshore wind turbines combining high efficiency with innovative solutions.

- ✓ **CAPACITY
FROM 1T TO 3T**
- ✓ **OUTREACH
FROM 2M TO 8M**
- ✓ **FIXED BOOM (SCF) OR CYLINDER LUFFED (SCL)
OPTIONS ARE AVAILABLE.**
- ✓ **AOPS/MOPS ACCORDING TO EN STANDARD**





MONORAIL HOIST SYSTEM

Made of fixed upper beam and traveling girder these devices allow transport of equipment from the vessel to the wind farm substation and consequently is adopted for the offshore lifting.

Monorail Hoist are DNVGL certified, in compliance with DNVGL-0378 and meet very restrictive requirements related to the corrosion protection.

✓ CAPACITY FROM 1T TO 2T

✓ AUTOMATIC TRAVEL MECHANISM

✓ RADIO REMOTE CONTROL SYSTEM

✓ AOPS/MOPS ACCORDING TO EN STANDARD



OVERHEAD CRANES

The Overhead Traveling Cranes are designed for transport of equipment and goods within the area of GIS, converter, transformer or reactor room.

Their modular structure and compact design enables easy transport and assembly.

✓ CAPACITY FROM 2,5T TO 12,5T

✓ SPAN FROM 3,0M TO 15,0M

✓ RADIO REMOTE CONTROL SYSTEM

✓ RADIO REMOTE CONTROL SYSTEM



WINCH PULLING SYSTEM

Electric Winch Pulling System Packages consists of electrical winch with nominal capacity of up to 30t and a combination of vertical, horizontal and pull-in sheaves, designed to transfer main power cables at wind farm installations.

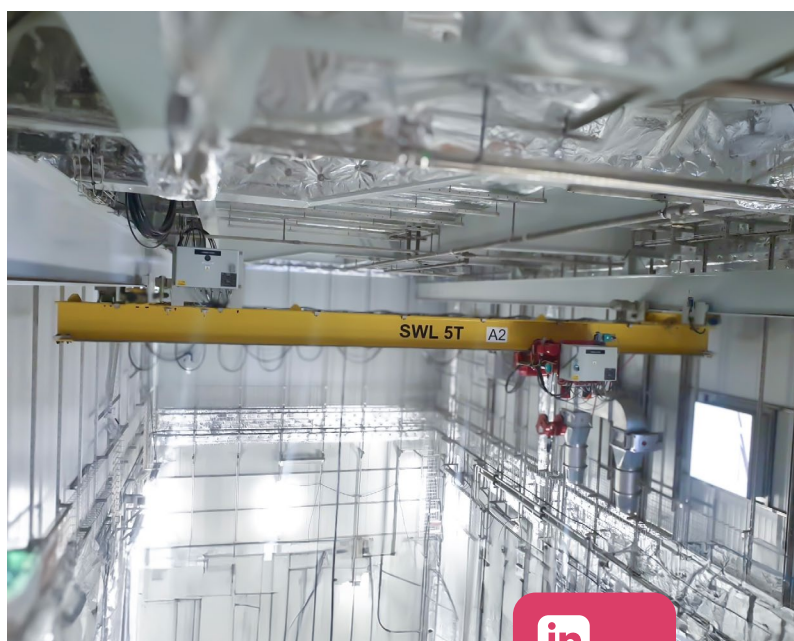
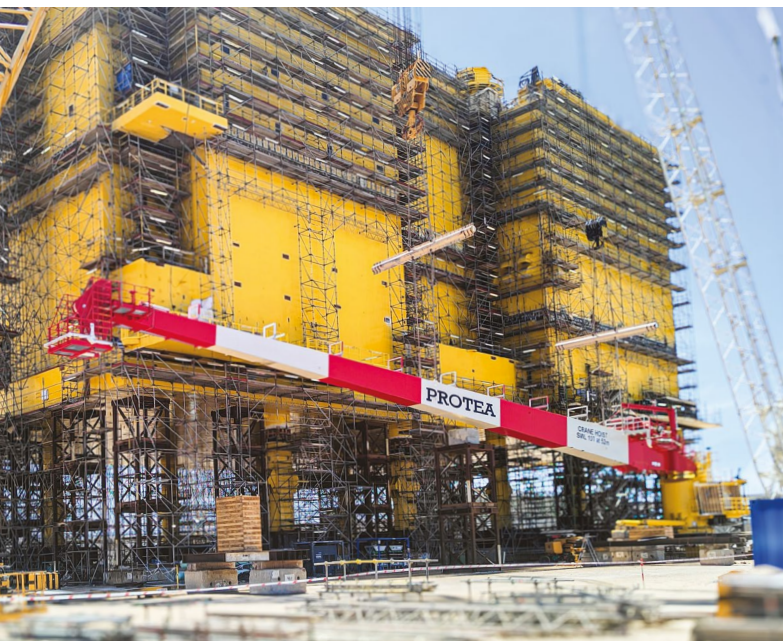
✓ CAPACITY UP TO 30T

✓ DRUM CAPACITY UP TO 400 M

✓ WIRE SPOOLING DEVICE

✓ RADIO REMOTE CONTROL SYSTEM





Protea S.A.
Galaktyczna 30A
80-299 Gdansk,
Poland

+48 58 348 00 04
protea@protea.pl
www.protea.pl



FOLLOW US!

